

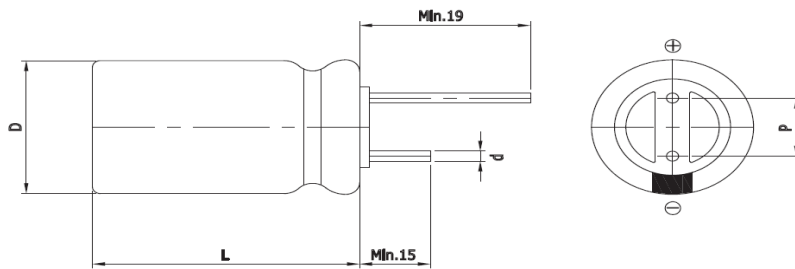
Features

EDLC (Electric Double Layer Capacitor)

- High Power Density (Low ESR)
- Over 500,000 cycle life (semi-permanent)
- Short-term Peak Power assist applications
- RoHS compliant



Drawing



D (Φ)	10.0 +1.0Max
L (mm)	20.0 ±1.5
d (Φ)	0.6 ±0.1
P (mm)	5.0 ±0.5

Specification

Item		Characteristics					
Product series		EDLC					
Rated Voltage (V _R)		2.7V					
Operating Temperature		-40 ~ +65°C					
Capacitance Tolerance		-10 ~ +30%					
High Temperature Load Life		After 1,000 hours at V _R loaded under +65°C, capacitors meet the following criteria.					
		Capacitance Change	≤ 30% of initial value				
		ESR	≤ 2 times of specified value				
		85°C Temperature	Max. 2.3V				
Cycle Life Characteristics	Cycle	Over 500,000					
	ΔC	≤ 30% of initial value					
	ESR	≤ 2 times of specified value					
	Method	Cycle of Charge/discharge from V _R to 1/2V _R					
Shelf Life		2 Years No Electrical Charge, Temperature below 70°C (ΔC : ≤ 10% of initial value / ΔESR : ≤ 50% of specified value)					
Part Number	Rated Voltage (V)	Capacitance (F)	ESR (mΩ)		Max. Current (A)	Leakage Current (mA, 72hr)	Size (mm)
			AC(1kHz)	DC			D × L
VEC 2R7 705 QG	2.7	7	55	95	5.5	0.014	10 X 20

* Max. Current : 1 sec. discharge to 1/2V_R

Version 9.2 2019.02.21.