

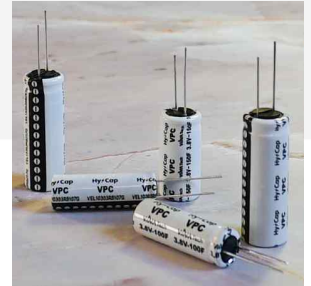
VPC0820 _ 3.8V 30F



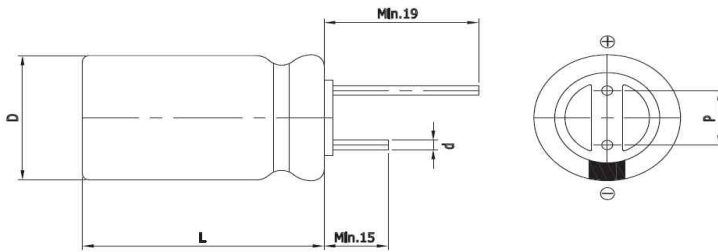
Features

VPC (Vina Pulse Capacitor)

- Low Self Discharge
- Wide Operating Temperature Range
- High Operating Voltage
- High Capacitance



Drawing



Size	0820
D (Φ)	8.0 +1.0 Max
L (mm)	20.0 ±1.5
d (Φ)	0.8 ±0.1
P (mm)	5.0 ±0.5

Specification

Item	Spec. value	Test methods
Operating Voltage Range	2.5V to 3.8V (2.5V to 3.5V @ 85°C)	
Operating Temp. Range	-25 ~ 85°C (-40 ~ 85°C @ in Li/SOCL2 battery system)	
Load Life @ 70°C	Capacitance : ± 30% of initial value ESR : Less than 200% of initial spec. Appearance : No abnormality	Temperature: 70±2°C, 85±2°C Time : 1,000 hours Voltage : 3.8V, 3.5V and measure the floating charge characteristics after returning to normal temperature and humidity.
Load Life @ 85°C		Temperature: 85±2°C, -40±2°C Duration: 30 min Cycle Numbers: 100 cycles
Heat cycle characteristics		Temperature : 25±2°C Cycle Number : 50,000 Discharge Current : 20 C-rate Cut-off Voltage : 2.5V (DOD 100%)
Cycle Life		The specification shall be met lower category temperature range of -25°C
Low Temperature characteristics	Capacitance : ± 50% of initial value ESR : Less than 20 times of initial spec.	

Part Number	Rated Voltage (V)	Rated Capacitance (F)	ESR _{DC} (mΩ)	ESR _{AC} (mΩ)	Leakage Current (μA)	Self Discharge (V)	Rated Current (A)	Pulse Current (A)	Weight (g)
VEL08203R8306G	3.8 Surge Voltage (4.0V)	30 @ 25°C #1	700 @ 25°C 100msec	350 @ 25°C 1kHz	1 @ 25°C 72hr	Over 97% @ 25°C #1	0.15 @ 25°C	0.5 @ 25°C #2	1.9±0.2

#1 Reference ICE62813 4.2
#2 1sec. Discharge to 3.2V