

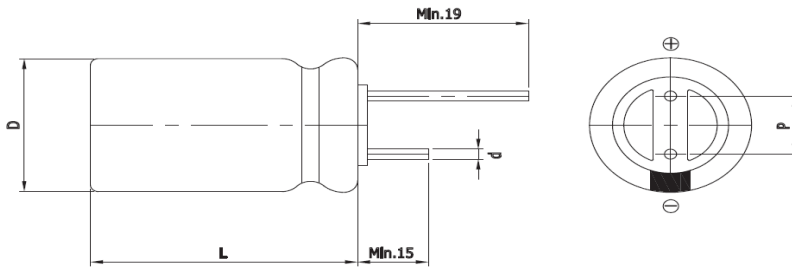
Features

EDLC (Electric Double Layer Capacitor)

- High Power Density
- Over 500,000 cycle life (semi-permanent)
- Short-term Peak Power assist applications
- RoHS compliant
- Long-term reliability improved at high temperature and humidity



Drawing



| | |
|--------|---------------|
| D (Φ) | 10.0 +1.0 Max |
| L (mm) | 25.0 ±1.5 |
| d (Φ) | 0.6 ±0.1 |
| P (mm) | 5.0 ±0.5 |

Specification

| Item | | Characteristics | |
|----------------------------|--------|--|------------------------------|
| Product series | | EDLC | |
| Rated Voltage (V_R) | | 2.7V | |
| Operating Temperature | | -40 ~ +65°C | |
| Capacitance Tolerance | | -10 ~ +30% | |
| High Temperature Load Life | | After 1,000 hours at V_R loaded under +65°C, capacitors meet the following criteria. | |
| | | Capacitance Change | ≤ 30% of initial value |
| | | ESR | ≤ 2 times of specified value |
| Cycle Life Characteristics | Cycle | Over 500,000 | |
| | ΔC | ≤ 30% of initial value | |
| | ESR | ≤ 2 times of specified value | |
| | Method | Cycle of Charge/discharge from V_R to $1/2V_R$ | |
| Shelf Life | | 2 Years No Electrical Charge, Temperature below 70°C (ΔC : ≤ 10% of initial value / ΔESR : ≤ 50% of specified value) | |

| Part Number | Rated Voltage (V) | Capacitance (F) | ESR (mΩ) | | Max. Current (A) | Leakage Current (mA, 72hr) | Size (mm) |
|----------------|-------------------|-----------------|----------|----|------------------|----------------------------|-----------|
| | | | AC(1kHz) | DC | | | D x L |
| WEC 2R7 106 QA | 2.7 | 10 | 37 | 65 | 8.0 | 0.020 | 10 x 25 |

* Max. Current : 1 sec. discharge to $1/2V_R$

Version 1.2 2019.02.21.